

PREVENTIVE MEASURES DURING COVID-19

Due to the pandemic outbreak, we have undertaken the following procedures to minimize the risk to all personnel. The measures are according to the strictest safety guidelines stipulated by various countries.

COUNTRY	FILMING PERMISSION	VIRTUAL SHOOT	RESTRICTIONS	SAFETY PROTOCOL	TRAVELING OUTSTATION	QUARANTINE DURATION
CHINA	Permitted	Offered	Unrestricted	Mask / Sanitizer*	Permitted	14 to 21 days
HONG KONG	Permitted	Offered	Unrestricted	Mask / Sanitizer*	Not permitted	14 to 21 days
THAILAND	Permitted	Offered	Unrestricted	Mask / Sanitizer*	Permitted	No Quarantine*
MALAYSIA	Permitted	Offered	Unrestricted	Mask / Sanitiser*	Permitted	No Quarantine*
SINGAPORE	Permitted	Offered	50 person groups	Mask / Sanitizer*	N/A	No Quarantine*

*Mask and Sanitizers on set plus the protocol listed below.

**For further details of restrictions, refer to remarks on page 4.

Updated on June 2022

- 1

TEMPERATURE CHECK

Check the temperature for all personnel before entering the set. Individuals with temperature above 37.5 degrees or displaying any adversed symptoms, would not be allowed on set.


- 2

DISCLOSURE

A full travel disclosure document would be required of all personnel, any individuals whom have traveled abroad, should be quarantined no less than 14 days. Anyfalse declaration would result in automatic expulsion from the project.


- 3

NAME LIST FOR ALL CREWS

We would have a list of names, addresses and telephone number for all personnel, in the event an individual is infected with COVID-19, the team will be able to advise the authorities to control the outbreak effectively.


- 4

SOCIAL DISTANCING

Whilst on set, social distancing of 2 meters apart is recommended.


- 5

MASKS

All personnel should wear a mask at all times.


- 6

KEEPING OUR HANDS CLEAN

We will prepare hand sanitizer with 70% alcohol or more at numerous stations throughout the set. Soap will also be available in bathrooms for personnel to wash their hands thoroughly.





CLEAN EQUIPMENT

7

All equipment will be thoroughly sanitized before and after use. Personnel equipment such as walkie talkies would be further sanitized periodically through the day.



TRANSPORTATION

8

All vehicles will be thoroughly sanitized before the shoot and after each trip.

All personnel must wear a mask at all times. Maximum of 2 person sitting in a row of seats, avoid overcrowding. A detailed log of all passengers in each vehicle will be required.



LOCATION

9

Avoid shooting in a small and crowded areas. If shooting in a studio is necessary, location manager will coordinate with production manager to limit only working personnel are allowed to enter the set.



ONE WAY ENTRY

10

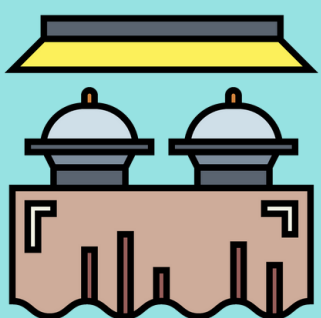
Set up a one-way entry if a large number of personnel are expected. This would permit efficient temperature screening and flow of personnel.



CLEANING

11

Sanitize frequently areas that have high traffic volume. Sanitize the surface areas before and after shooting.



WHEN DINING

12

Seating for dining area, need to be 1-2 meters apart. Sanitize the surfaces such as tables and chairs before and after each meal.



OUR MEALS

13

Avoid serving raw foods such as salads and raw vegetables. Only cooked menus will be served. All food service team must wear a mask and wash hands at all times.



SERVING OF FOOD

14

Arrange food, snacks and desserts separately for each person in as meal box set. Self serving buffets are to be avoided, food service team wearing masks and head cover, will dispense the food required. Social distancing must be observed and personnel should not queue closely for food. Do not share food containers. Water should be served in individual enclosed bottles, labeled with names. Hand sanitizer are to be placed near the food and drink areas.



WHILE FILMING

15

When shooting scenes that requires talents to interact closely, talents must wash their hands as often as possible before and after. During briefing, talents and personnel should remain 1-2 meters apart and wash hand every time after any contact.



SKIN CONTACT SCENES

16

Best avoided or be extra cautious when shooting any contact scenes such as hugging, fighting. If intimate scenes are required, talents must undergo a medical test and report before filming for safety purpose.

17

ART DEPARTMENT

All props and sets are to be sterilize before being utilized for filming. Clean the surfaces of furniture before shoot. Avoid furniture that are difficult to clean such as fabric sofas, cushions, pillows, tablecloths.



18

WARDROBE DEPARTMENT

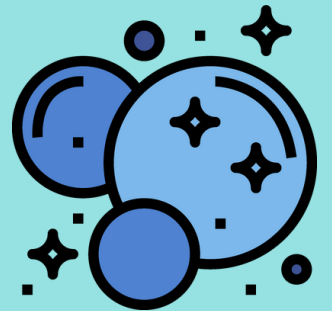
Wardrobe department should have cast handle their own wardrobe change. If assistance is required, crews should wash hands and wear masks every time. Hang the wardrobe separately for each talent, do not hang together. Clothes need to be laundered with 70 degree Celcius water or with detergent and water.



19

FOR MAKE-UP AND HAIR STYLING

Due to having to work closely with the talents for long hours, make-up artist and hair stylist need to wear a mask at all times. Before doing make-up and hair, clean or wash your hands with alcohol gel or soap and water. Talents have to clean their face with cleansing foam or gel each time before doing make-up.



20

DURING MAKE-UP

During make-up, avoid speaking loudly to prevent droplet transmission on to the cosmetic tools, or infect surrounding people.

21

HANDLING MAKE-UP TOOLS

Separate hair and make-up tools into sets for each talent. Clean the tool after each use, especially tools that touched the face or hair, such as brushes, make-up puffs, lipstick brush, comb, curling iron, hair mask, spray etc, with alcohol or soapy water once the make-up and hair were done by each talent. Talents are advised to bring their own make-up tools if possible.



22

AVOID SHARING MAKE-UP TOOLS

Talents are advised to bring their own make-up set, avoid sharing if possible.



23

TOUCHING UP

When make-up artist are required to do the touch ups, they should sanitize their hands before and after every touch up.

COUNTRY	REMARKS
CHINA	<ul style="list-style-type: none"> - All visitors including Chinese citizens are required to apply for an entry permit. - Travellers that are allowed to enter must obtain a negative PCR test results issued no more than 48 hours before travelling and obtain a health declaration form from the nearest Chinese Embassy or Consulate before travel. - Travellers need to comply with 14 to 21 days quarantine. Quarantine period vary depending on country of origin.
HONG KONG	<ul style="list-style-type: none"> - All visitors including Hong Kong citizens are required to apply for an entry permit. - Travellers that are allowed to enter must apply for a recognised vaccination record document and obtain a negative PCR test results issued no more than 48 hours before travelling. - Compulsory designated hotel booking confirmation for 14 to 21 nights quarantine. Quarantine period vary depending on country of origin.
THAILAND	<ul style="list-style-type: none"> - All visitors including Thailand citizens are required to apply for an entry permit via ThailandPlus app. - No pre-departure PCR test and quarantine needed for fully vaccinated individual.
MALAYSIA	<ul style="list-style-type: none"> - All visitors including Malaysia citizens are required to apply for an entry permit via MySejahtera app. - No pre-departure PCR test and quarantine needed for fully vaccinated individual.
SINGAPORE	<ul style="list-style-type: none"> - All visitors including Singapore citizens are required to apply for an entry permit via TraceTogether app. - No pre-departure PCR test and quarantine needed for fully vaccinated individual.

The above guidelines may vary from city to city, depending on the local government regulations; we will work closely to monitor any updates and do our best to ensure a safe working environment.

