

PREVENTIVE MEASURES DURING COVID-19

Due to the pandemic outbreak, we have undertaken the following procedures to minimize the risk to all personnel. The measures are according to the strictest safety guidelines stipulated by various countries.

COUNTRY	FILMING PERMISSION	VIRTUAL SHOOT	RESTRICTIONS	SAFETY PROTOCOL	TRAVELING OUTSTATION	FOREIGN VISITOR
CHINA	Permitted	Offered	Unrestricted	Mask / Sanitizer*	Permitted Except Beijing	Not permitted
HONG KONG	Permitted	Offered	10 person groups	Mask / Sanitizer*	Not permitted	Not permitted
THAILAND	Permitted	Offered	150 person groups	Mask / Sanitizer*	Permitted	Not permitted
MALAYSIA	Permitted	Offered	50 person groups	Mask / Sanitizer*	Permitted	Not permitted
SINGAPORE	Permitted	Offered	30 person groups	Mask / Sanitizer*	Not permitted	Not permitted

*Mask and Sanitizers on set plus the protocol listed below.

Updated on 26th June 2020

**For further details of restrictions, refer to remarks on page 4.

1 TEMPERATURE CHECK

Check the temperature for all personnel before entering the set. Individuals with temperature above 37.5 degrees or displaying any adverse symptoms, would not be allowed on set.



2 DISCLOSURE

A full travel disclosure document would be required of all personnel, any individuals whom have traveled abroad, should be quarantined no less than 14 days. Any false declaration would result in automatic expulsion from the project.



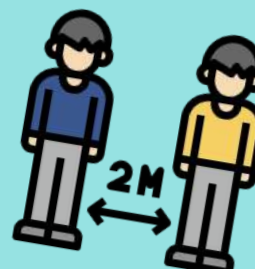
3 NAME LIST FOR ALL CREWS

We would have a list of names, addresses and telephone number for all personnel, in the event an individual is infected with COVID-19, the team will be able to advise the authorities to control the outbreak effectively.



4 SOCIAL DISTANCING

Whilst on set, social distancing of 2 meters apart is recommended.



5 MASKS

All personnel should wear a mask at all times.



6 KEEPING OUR HANDS CLEAN

We will prepare hand sanitizer with 70% alcohol or more at numerous stations throughout the set. Soap will also be available in bathrooms for personnel to wash their hands thoroughly.





CLEAN EQUIPMENT

7

All equipment will be thoroughly sanitized before and after use. Personnel equipment such as walkie talkies would be further sanitized periodically through the day.



TRANSPORTATION

8

All vehicles will be thoroughly sanitized before the shoot and after each trip.
All personnel must wear a mask at all times. Maximum of 2 person sitting in a row of seats, avoid overcrowding. A detailed log of all passengers in each vehicle will be required.



LOCATION

9

Avoid shooting in a small and crowded areas. If shooting in a studio is necessary, location manager will coordinate with production manager to limit only working personnel are allowed to enter the set.



ONE WAY ENTRY

10

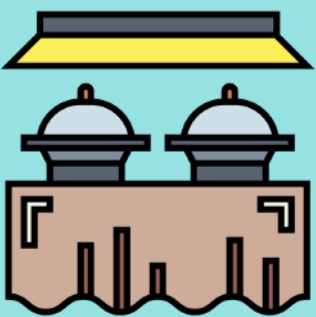
Set up a one-way entry if a large number of personnel are expected. This would permit efficient temperature screening and flow of personnel.



CLEANING

11

Sanitize frequently areas that have high traffic volume. Sanitize the surface areas before and after shooting.



WHEN DINING

12

Seating for dining area, need to be 1-2 meters apart. Sanitize the surfaces such as tables and chairs before and after each meal.



OUR MEALS

13

Avoid serving raw foods such as salads and raw vegetables. Only cooked menus will be served. All food service team must wear a mask and wash hands at all times.

SERVING OF FOOD

14

Arrange food, snacks and desserts separately for each person in as meal box set. Self serving buffets are to be avoided, food service team wearing masks and head cover, will dispense the food required. Social distancing must be observed and personnel should not queue closely for food. Do not share food containers. Water should be served in individual enclosed bottles, labeled with names. Hand sanitizer are to be placed near the food and drink areas.



WHILE FILMING

15

When shooting scenes that requires talents to interact closely, talents must wash their hands as often as possible before and after. During briefing, talents and personnel should remain 1-2 meters apart and wash hand every time after any contact.



SKIN CONTACT SCENES

16

Best avoided or be extra cautious when shooting any contact scenes such as hugging, fighting. If intimate scenes are required, talents must undergo a medical test and report before filming for safety purpose.

17

ART DEPARTMENT

All props and sets are to be sterilize before being utilized for filming. Clean the surfaces of furniture before shoot. Avoid furniture that are difficult to clean such as fabric sofas, cushions, pillows, tablecloths.

**18**

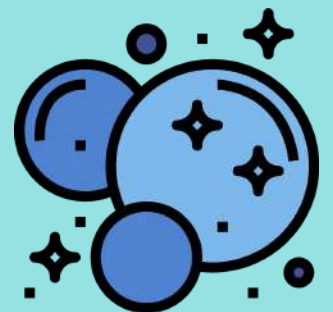
WARDROBE DEPARTMENT

Wardrobe department should have cast handle their own wardrobe change. If assistance is required, crews should wash hands and wear masks every time. Hang the wardrobe separately for each talent, do not hang together. Clothes need to be laundered with 70 degree Celcius water or with detergent and water.

**19**

FOR MAKE-UP AND HAIR STYLING

Due to having to work closely with the talents for long hours, make-up artist and hair stylist need to wear a mask at all times. Before doing make-up and hair, clean or wash your hands with alcohol gel or soap and water. Talents have to clean their face with cleansing foam or gel each time before doing make-up.

**20**

DURING MAKE-UP

During make-up, avoid speaking loudly to prevent droplet transmission on to the cosmetic tools, or infect surrounding people.

21

HANDLING MAKE-UP TOOLS

Separate hair and make-up tools into sets for each talent. Clean the tool after each use, especially tools that touched the face or hair, such as brushes, make-up puffs, lipstick brush, comb, curling iron, hair mask, spray etc, with alcohol or soapy water once the make-up and hair were done by each talent. Talents are advised to bring their own make-up tools if possible.

**22**

AVOID SHARING MAKE-UP TOOLS

Talents are advised to bring their own make-up set, avoid sharing if possible.

**23**

TOUCHING UP

When make-up artist are required to do the touch ups, they should sanitize their hands before and after every touch up.

COUNTRY	REMARKS
CHINA	<ul style="list-style-type: none"> - All China Visa (except of C visa), APEC business card holder / visa-free transit / residence permits are restricted from entry. - China Citizen / Type C visa are allowed to enter with 14-days of quarantine.
HONG KONG	<ul style="list-style-type: none"> - All non-Hong Kong residence are restricted from entry. - Hong Kong Permanent IC / Hong Kong SAR passport or British National (Overseas) passport (with right of abode in Hong Kong) / Hong Kong IC accompanied with a valid work or study visa are allowed to enter. - Person that are allowed to enter must submit a health declaration form and comply with 14-days of quarantine.
THAILAND	<ul style="list-style-type: none"> - All non-Thailand residence are restricted from entry. - Persons on diplomats, cargo shipments, pilots, and foreigners with a work permit are allowed to enter. - Person that allowed to enter must obtain a Fit to Fly Health Certificate which has been certified or issued no more than 72 hours before travelling and comply with disease prevention measures prescribed by the Government after enter.
MALAYSIA	<ul style="list-style-type: none"> - All non-Malaysia residence are restricted from entry. - Malaysian, PR holder and their spouse and children (Long-term pass holder or Dependent pass) are allowed to enter with 14-days quarantine.
SINGAPORE	<ul style="list-style-type: none"> - All short-term visitor are restricted from entry. - All Singapore Citizens, Permanent Residents and Long Term Pass holders are allowed to enter with 14-days quarantine.

The above guidelines may vary from city to city, depending on the local government regulations; we will work closely to monitor any updates and do our best to ensure a safe working environment.



<https://www.popfilms.asia>



producer@popfilms.asia